

Whimsical Angel

by Fran Higgins

As egg arts, we never know where our next inspiration will cross our paths. I've always found wrapping paper, greeting cards, notecards etc. great mediums for ideas. Several years ago, a friend sent me a Christmas card with an angel on it. I immediately knew I was going to have to figure out how to turn it into an egg. Used the head, stars and color as the main elements my Whimsical Christmas Angel was born.



Supplies:

1 Large duck or small goose egg
Yellow acrylic paint – Craftsmart Dark Yellow or color of choice
Gold metallic paint – FolkArt Pure Gold #660
Organza fabric or Posey cloth
26-gauge gold wire
Brown raffia
2 1/2" wiggle eyes
Small gold stars
Class-a-Peel Stars Gold #AP114G
JonesTones Lazer Gems Gold Stars
Up Eye – Robbins Nest Up Eye #1 or Golden Egg #78-L Gold
Gold finding – Golden Egg #9534
Gold cord
Black dimensional paint – Tulip Slick Dimensional Fabric Paint

Directions:

Paint the egg yellow and let dry. When dry, sponge with a mixture of the yellow with metallic gold to create a faux effect.

While the paint is drying, cut out the wings template (Figure 1a) and a square of the organza cloth using the wing template below leaving a 1/2 inch border. (Figure 1b)



Figure 1a

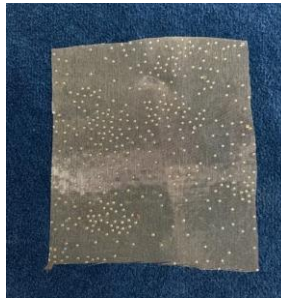


Figure 1b

To make the wings, shape the 26-gauge wire around the template (Figure 2a). Be sure to leave a tail on each end of the wire to twist down the inside middle of the wings. Twist one of the ends around the other end creating a straight line in the middle of the wings. You may need to smooth some of the curves with your thumbs, so they look more even. (Figure 2b)



Figure 2a

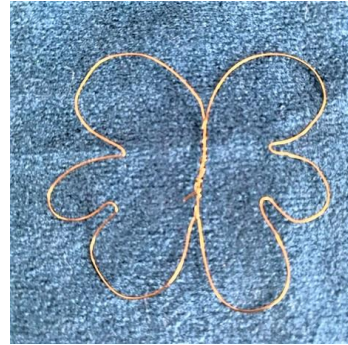


Figure 2b

Apply glue around one side of the wings then apply to the square of organza with twisted wire side up (Figure 2c). Use a book or other heavy object to ensure fabric and wire adhere evenly. (Figure 2d)



Figure 2c



Figure 2d

Glue the up eye to the top of the egg (Figure 3a).



Figure 3a

Check the wings to make sure all edges are glued down. You may need to reapply glue in some sections. When dry, trim the excess fabric from the wings (Figure 4a).



Figure 4a

Glue the gold finding over the center of the wings on the side without the wire.



Figure 4b

Attach the gold cord for hanging the egg to the loop of the up eye.

Glue the wings to the back of the egg (Figure 5a). Use epoxy for this step. When dry, glue small gold stars to the wings over the organza on both sides.



Figure 5a

To make the hair, cut raffia in short pieces (2-4") (Figure 6a). Take several pieces and tie in the middle with a piece of raffia. This gives a better base for gluing to the egg. You can do more than one bundle for a fuller head of hair. When you have your hairdo complete, glue the hair to the top of the egg behind the loop on the up eye. Once the glue is dry, begin shaping the hair. You also can glue single pieces around the bundles to give it a wilder, messier look and trim ends to different lengths.



Figure 6a



The last step is to add the Class-a-Peel stars to the body of the egg—as few or as many as you want. Glue the wiggle eyes to the face then paint mouth, nose and eyes below the eyes with the dimensional fabric paint. Your angel is now complete and you can name her. Meet Abigail.

